



# SOMPTING SIGNPOST



The official news magazine from Sompting Parish Council

[www.sompting.org.uk](http://www.sompting.org.uk)

Over 4000 copies delivered to homes and shops throughout Sompting (AUTUMN 2014)

**IN THIS ISSUE..... NEIGHBOURHOOD PLAN MOBILITY SCOOTERS  
SOMPTING FESTIVAL PARISH WALK BEST GARDENS DOUG SHERRIF AWARD VICTORIAN  
CHRISTMAS GRANTS CHRISTMAS FESTIVITIES BUS SURVEY and more.....**

## **SOMPTING NEIGHBOURHOOD PLAN**

### **Remind me, what is a Neighbourhood Plan?**

A Neighbourhood Plan gives communities direct power to develop a shared vision for their neighbourhood and deliver the sustainable development they need. It provides a policy framework affecting land use, transportation, education, housing, business and employment. It offers our community the opportunity to influence how our area will change over time. Community views were canvassed through a series of workshops, public consultations including a household survey, leaflets, public drop-in sessions, and stands at the Sompting Festival. Our collective knowledge and sense of what is good for Sompting will be vital to its success.

### **Why is it important?**

If we want Sompting to conform to our vision and meet our future needs this is the way we do it. It can affect the amount of new housing and what the development will provide for the community. It can prevent new buildings being more than two storeys high; specify the design of new homes to reflect the local area; protect community assets such as Sompting Rec and the Harriet Johnson Centre and include policies / proposals designed to promote / defend the things that make Sompting special. What it can't do is to prevent all new housing development or anything to do with the A27 traffic issues, although it can make proposals for crossing improvements.

### **What stage are we at now?**

The Neighbourhood Plan Steering Group, made up of representatives from the local community, local businesses, Action in Rural Sussex, and Sompting Parish Council, is now finalising the draft Neighbourhood Plan covering those key areas identified by us, the local community.

### **What happens next?**

Adur District Council, the local planning authority, will check the draft to ensure it is acceptable with their strategic planning policies and advise on the necessity for a Strategic Environmental Assessment. When all that work has been done we, the local community, have six weeks to comment on the Draft Neighbourhood Plan. If necessary, the Draft Plan is amended to reflect our comments and again consulted on, prior to Sompting Parish Council's approval. Adur District Council then pass it to an Independent Planning inspector for referendum consent at which we, the local community, can vote to adopt the plan. Once adopted Adur District Council has to include our Neighbourhood Plan in their Local District Plan.

### **Where do I find out more?**

Watch this space, come to a Sompting Parish Council meeting, ask your ward councillors, or check out the Sompting Parish Council website at [www.sompting.org.uk](http://www.sompting.org.uk) or noticeboards.



-----  
**Do you use a mobility scooter or push a buggy?  
Are you having trouble with kerbs?  
Please let us know the location?  
We will pass on the information to W.S.C.C  
Either ring 01903 208824 or e mail [clerk@sompting.org.uk](mailto:clerk@sompting.org.uk)**



## **YOUR RIGHT TO VOTE - CHANGES ARE TAKING PLACE**

From 10 June 2014, people registering to vote in England and Wales will register as individuals instead, using a new more secure system - See more at: [www.aboutmyvote.co.uk](http://www.aboutmyvote.co.uk)

# WHAT'S BEEN HAPPENING.....

## SOMPTING FESTIVAL 2014

This was held on 13<sup>th</sup> 14<sup>th</sup> and 15<sup>th</sup> June 2014 at Sompting Recreation Ground and the Harriet Johnson Centre. Highlights included the School Parade, Scarecrow Festival, Fun Dog Show and Somptin' Old.

If **YOU** have any ideas or would like to help with next year's festival - please contact [clerk@sompting.org.uk](mailto:clerk@sompting.org.uk)

### FUN DOG SHOW



Best in Show was the Schipperke Cody from Sompting. Reserve Best in Show was Pippet the Golden Retriever from Crowborough. The show raised £104 for Pets as Therapy. Judge was Mitzi Morrison [www.petsastherapy.org](http://www.petsastherapy.org)

### SCARECROW COMPETITION

Winner of the 'Most Popular Scarecrow'



(voted by the public) was Maisie Ovenden from Worthing

### SOMPTIN' OLD



Somptin' Old held their exhibition of past photos of Sompting.

Also at the Centre were craft stalls, lovely homemade refreshments and.....sheep!!



### School Parade

Sompting Village School surpassed themselves again, with a fantastic World Cup Display. This event is seen by many as possibly one of the most important parts of the Sompting Festival as it brings so many people together. The displays just keep getting better year on year and Sompting should be very proud of her children.....after all, they are Sompting's future!



### ANNUAL SOMPTING PARISH WALK AND PICNIC – 26<sup>th</sup> JULY



Approximately 20 walkers left the Harriet Johnson Centre at 10.30am on a VERY hot day. They walked to the Downs Barn in the countryside above Sompting where they were joined by a few more people .....and a dog, for the picnic. The walk was led by Mike Tristram who spoke about his continuing work with Sompting Estates.



### WILD WEST FUN

Around 80 people attended a 'Wild West Evening' at the Harriet Johnson Centre in aid of St Barnabas Hospice. The evening raised over £1000 with line dancing, a shooting gallery and hoopla all on offer. Hot dogs and apple pie were also the order of the day.



### SOMPTING SENIORS OUTING

Sompting Seniors enjoyed their annual summer outing – this year it was a trip on the Lavender Line at Isfield with a meal afterwards.



The day turned into a bit of an adventure when unfortunately one of the minibuses broke down on the way back!!



..... **AND WHAT'S PLANNED**



Don't forget the.....  
**Sompting Best Gardens Competition**  
 running throughout the summer.  
 This year, you can nominate your  
 neighbours garden or simply one you  
 admire when walking around Sompting  
 or even .....your own. Nominations to be  
 returned by **30<sup>th</sup> September** – form on  
 website.



**DON'T FORGET THE .....**  
**DOUG SHERRIFF AWARD**  
 ONGOING THROUGHOUT THE SUMMER –  
 FOR A GROUP OR PERSON WHO HAS  
 GIVEN AN OUTSTANDING CONTRIBUTION  
 TO THE SOMPTING COMMUNITY  
 THROUGHOUT THE YEAR - FOR  
 DETAILS AND NOMINATION FORMS  
 SEE WEBSITE – CLOSING DATE  
**30<sup>TH</sup> SEPTEMBER**



**AWARDS AFTERNOON**  
 Sunday 26<sup>th</sup> October - 3pm at the  
 Harriet Johnson Centre  
 for presentation of  
 Sompting Best Gardens and Doug  
 Sherriff Awards

Basic 1<sup>st</sup> Aid Course  
 at Harriet Johnson Centre  
 Saturday 1<sup>st</sup> November  
 9.30am to 1.30pm. For details and  
 registration form see website  
 (by 17<sup>th</sup> October)



*28<sup>th</sup> November 2014*  
*Join us for a Victorian Christmas at*  
*Harriet Johnson Centre 7 – 9pm*  
*with Timespan*



*Travel back to Victorian times and see how they celebrated Xmas.*  
*£2.50 Refreshments included*

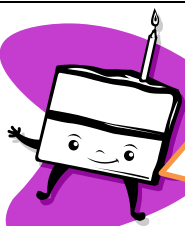


**COMMUNITY CAROLS ON THE PARK - WEDNESDAY 17<sup>TH</sup> DECEMBER**  
 (Sompting Recreation Ground - or Harriet Johnson Centre if wet)

This expanding community event will include children's rides, mulled wine,  
 mince pies, live singing of Christmas carols assisted by Sompting Community  
 Church.....and if we are all good, a special visit from Father Christmas himself  
 with a little something for the children... And maybe more.....



FOR DETAILS ON ALL THE ABOVE - SEE WEBSITE AT [www.sompting.org.uk](http://www.sompting.org.uk)



*HELLO, MY NAME IS GRANT  
 SLICE AND I MAY BE ABLE  
 TO HELP YOU OR YOUR  
 ORGANISATION GET  
 FUNDS FOR YOUR  
 PROJECT!!!*

**INTERESTED?**

Then apply to the Council - for a slice of our  
 grant cake.  
 It's easy!

Visit our web site - [www.sompting.org.uk](http://www.sompting.org.uk) - click  
 on "Finance/grants from council", download the  
 relevant applicationform, fill it in and submit to us  
 by the closing date and we will contact you in  
 January.

**INITIAL FINDINGS  
 FROM BUS  
 SURVEY**



Your returned  
 questionnaires have been  
 analysed and the results will be  
 shown on the web shortly. The  
 Council has been discussing how  
 a bus service provision in north  
 Sompting can be achieved with  
 the Big Local  
 transport committee  
 and we will be  
 seeking a solution  
 with them shortly.



**CHILDRENS  
 CORNER  
 AUTUMN  
 ANAGRAMS**

1. EASELV
  2. AELGOFI
  3. SREET
  4. ISLURQRE
  5. ORBWN
  6. OCNAR
  7. KEAR
  8. IWND
  9. SANSOE
  - 10.DER
- Answers on  
 back page





# HARRIET JOHNSON CENTRE



Available for  
**Children's Parties, Meetings, Wedding Receptions, Concerts, Groups**  
**Competitive Rates**



For further information phone 01903 208824 or  
 email [harrietjohnsoncentre@sompting.org.uk](mailto:harrietjohnsoncentre@sompting.org.uk)  
 or see our website where you can download information and forms  
[www.sompting.org.uk](http://www.sompting.org.uk)

*The Centre currently has several groups and activities during the day and evening for all ages, covering a variety of interests. More details of contacts can be found on the website or contact the Centre Manager  
 Do you have a group that is looking for a venue – then why not try the Centre. See above for contact details*

## STAFF AT THE HARRIET JOHNSON CENTRE

CENTRE MANAGER - SIMONE WILLIAMS – 01903 208824 – [harrietjohnsoncentre@sompting.org.uk](mailto:harrietjohnsoncentre@sompting.org.uk) (MON/WED/FRI 10am to 12 noon)

## STAFF AT THE OLD SCHOOL HOUSE

DAVID PORTER PARISH CLERK – 07813484857  
 SUE TUBB ASSISTANT PARISH CLERK – 01903 208824

[clerk@sompting.org.uk](mailto:clerk@sompting.org.uk) (TUE/WED 10am to 12 noon)  
[assistantclerk@sompting.org.uk](mailto:assistantclerk@sompting.org.uk) (TUE/WED/THUR 10am to 12 noon)

## USEFUL NUMBERS (all 01903 unless stated)

Harriet Johnson Centre – 208824  
 Doctors – Ball Tree Surgery - 752200  
 Dentist – Ball Tree - 754224  
 Chemist – Cokeham Pharmacy – 753454  
 Vets – Grove Lodge - 234866

Police – PCSO – 07775406784  
**Sompting Parish Council - 07813484857**  
**(Emergency number 07580873500)**  
 Adur/Worthing Council 01273 263000  
 (Emergency number 07879412971)  
 West Sussex County Council 01243 777100

## THE FOLLOWING WERE ELECTED AS YOUR PARISH COUNCILLORS AT THE ELECTIONS IN MAY 2014

COKEHAM NORTH	COKEHAM SOUTH	PEVEREL NORTH	PEVEREL SOUTH
<b>CHAIR</b> Cllr B Mear 55 Busticle Lane Sompting BN15 0DL 01903 527292 	Cllr D Bamber 3 Abbotts View Sompting BN15 ONG 01903 764881 	Cllr C Servante 21 Whitestyles Road Sompting BN15 0BZ 01903 751946 	Cllr Mrs J Burns 46 Halewick Lane Sompting BN15 0ND 01903 529930 
Cllr K Bashford 29 Berridale Drive Sompting BN15 0LE 01903 766261 	Cllr M Thornton 34 Busticle Lane Sompting BN15 0DJ 01903 531595 	Cllr G Smith 15 Loose Lane Sompting BN15 0BL 07880316525 	Cllr David Lewis 38 Loose Lane Sompting BN15 0BH 
<b>VICE CHAIR</b> Cllr Mrs S Wood 8 Mountview Road Sompting BN15 0JZ 07931742116 	Cllr K Vincent 95 Cokeham Lane Sompting BN15 9SJ 01903 766341 	Cllr C Tufnell 24 Dankton Gardens Sompting BN15 0DR 01903 750394 	Cllr Gina Scotting 36 Monks Close Lancing BN15 9DD 01903 763038 

## DO YOU KNOW WHO IS RESPONSIBLE FOR ....?

*Recreation Grounds including play equipment* Sompting, Halewick, Hamble, ADC 01903 221067  
*Including play equipment* Crowshaw – Lancing Parish Council – 01903 753355  
 Open Spaces – Meadow View 01903 221067  
**WSSC 01243 642105**  
*Roadside and roundabout grass areas* Sompting Parish Council 07813484857/Big Local  
*Flower Beds* Residential – WSSC via SEE Contracting 08000482435  
*Street lighting* A27 - Highways Agency 03001235000

*Potholes, road and pavement issues* Residential WSSC – 01243 642105  
 A27 - Highways Agency 03001235000  
**WSSC 01243 642105**  
**WSSC 01243 77762**

*Traffic Lights*  
*Public Footpaths, Bridleways*

Anagram answers leaves, foliage, trees, squirrel, brown, acorn, take, wind, season, red